

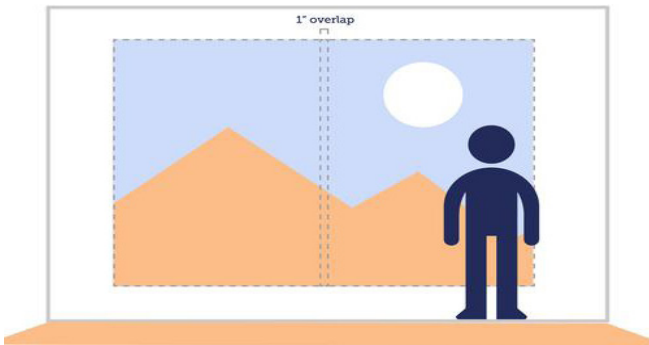
INSTALLATION

PREP THE WALL



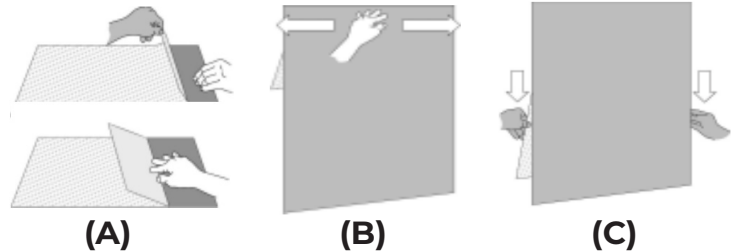
- CHECK THAT THE WALL HAS BEEN PRIMED AND PAINTED. IF NOT, WE RECOMMEND USING THE ROMAN PRO-935 CLEAR ADHESION PRIMER AND ALLOW 24 HOURS TO DRY.
- IF THE WALL WAS RECENTLY PAINTED, PLEASE WAIT 30 DAYS TO MAKE SURE THE PAINT HAS COMPLETELY OUTGASSED.
- MIX 70% ISOPROPYL ALCOHOL WITH 30% WATER. THE ALCOHOL MUST BE DILUTED OR IT WILL CAUSE ISSUES SUCH AS BUBBLING. MAKE SURE YOU CLEAN THE WALL THOROUGHLY. WAIT UNTIL IT FLASHES OFF (DRIES) AND REPEAT.

OVERLAPPING



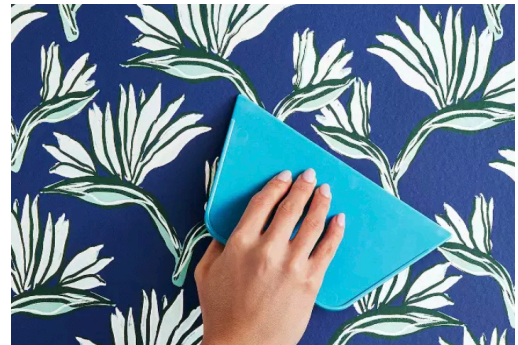
WE SUGGEST A 1" OVERLAP WHEN USING THE OPAQUE VERSIONS. DO NOT TRY TO SPLIT CUT AND BUTT THE OVERLAP WHEN USING THE OPAQUE MATERIAL, IT CAN LEAVE A WHITE LINE. IT IS OK TO SPLIT CUT THE OVERLAP ON THE NON-OPAQUE VERSIONS. BE CAREFUL USING TAPE TO ALIGN THE MATERIAL WITH LATEX INKS. REMOVING IT TOO FAST CAN PULL THE INK OFF.

LET'S APPLY



- A) BEGIN APPLICATION BY PEELING BACK THE BACK LINER 8-10" AND CREAMING THE UNDER-LINER.
 - B) ALIGN THE MATERIAL ON THE WALL AT YOUR DESIRED STARTING POINT.
 - C) ONCE IN POSITION, PEEL BACK LINER 6-8" AT A TIME.
- SQUEEGEE THE MATERIAL FROM THE MIDDLE TO THE EDGES. APPLY GOOD PRESSURE DURING APPLICATION.
 - OK TO PEEL AND RE-APPLY TO RELEASE BUBBLES,

TIPS + TRICKS



- USE NON-OPAQUE VERSIONS ONLY FOR GLASS, OR METAL SURFACES.
- USE EXS HIGH TACK ONLY ON SMOOTH FLOORS OR TIGHT WEAVE CARPETS.
- USE THE OPAQUE VERSION WHEN OVERLAPPING/PANELING.
- USE A VERY SHARP KNIFE WHEN CUTTING THE FABRIC.
- RECOMMEND THE OPA OVER THE OPAS WHEN PRINTING ON UV, LATEX INKS.

SUGGESTIONS

*PHOTO TEX CAN BE RE-POSITIONED MULTIPLE TIMES., ONCE THE ADHESIVE COLLECTS TOO MUCH DUST, DIRT OR FIBERS, IT WILL BECOME LESS EFFECTIVE IN STICKING PROPERLY TO THE SURFACE.

*IF A BUBBLE RE-APPEARS, LIGHTLY RUBBING AND PRESSING CAN REMOVE IT.

Note: If bubble reappears then you will need to lift the material and re-apply this area releasing the trapped air.